

ELEVIO

Passenger Elevators



Design meets functionality with the **ELEVIO** passenger elevators.

It has been designed to accommodate all your people movement requirements and provides a varied choice in terms of Aesthetics. The elevator is scalable and is completely modular to fit your every need.

Suitable for all building types from **Residential** to **Commercial**.



ELEVIO

Customize your ride

Passenger movement within different buildings vary based on the application. ELEVIO gives you the flexibility to customize your elevator to match the building needs and modularity to design it the way you want.

Key figures	
Capacity	272 kg - 1768 kg
Travel height	Up to 75 m
Stops	Max 40 stops
Speed	0.7 m/s - 2.5 m/s
Drive system	Machine-room-less, eco-friendly regenerative drive technology, frequency controlled
Group size	Up to 6 cars
Entrances	One- or two-sided

Contemporary Looks
Fresh Colours



Design freedom
Fully customizable
interiors



Robust Design
Built to last



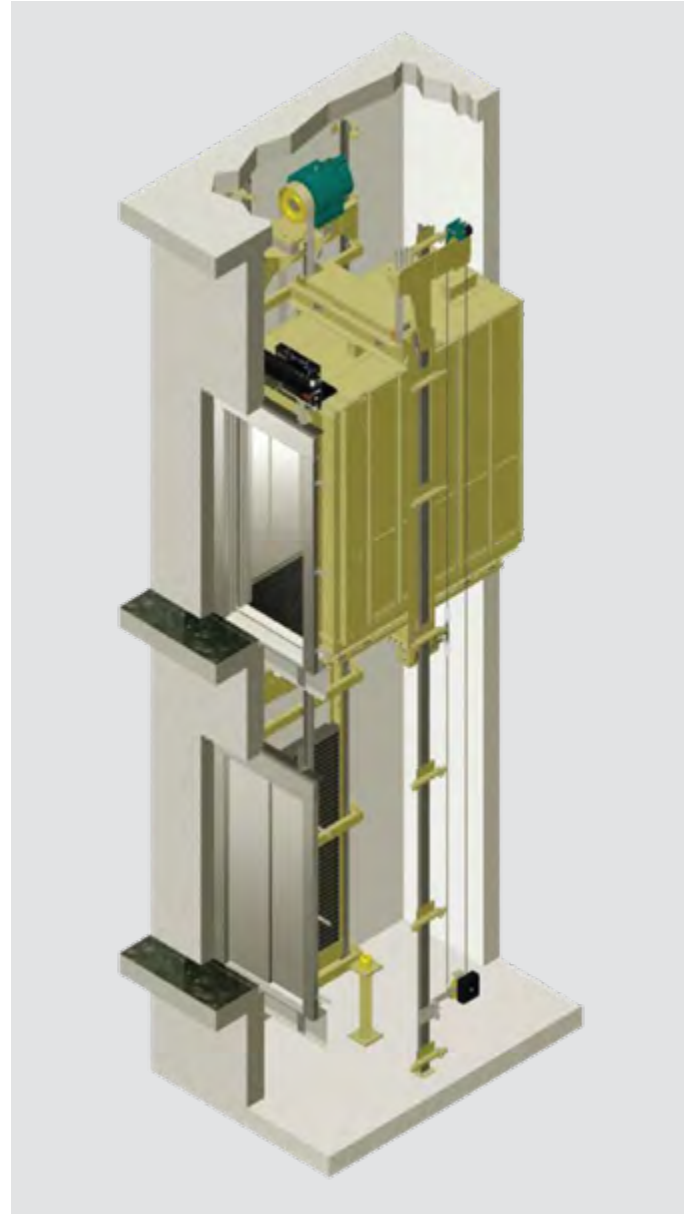
Elegant Aesthetics
Luxurious interiors
that stand out

Note: Specifications, options and colors are subject to change. All cars and options illustrated in this brochure are representative only. The samples shown may vary from the original in color and material.

Planning and Components

Best in class flexibility

Escon Elevio range provides unmatched flexibility and the robust components ensures constraint free solutions for your elevator planning allowing more passengers within the same shaft area



Machine-room-less design

The elimination of the machine room leads to lower construction costs. It also provides more rentable space in the building.

And thanks to the compact gearless machine, a larger car can be fitted into a standard shaft space, reducing headroom space and pit depth.

MRL Elevator technology uses smaller motors, which, in turn, down sizes the necessary power supply and thereby building energy operating costs.



Modular system, scalable car and door dimensions

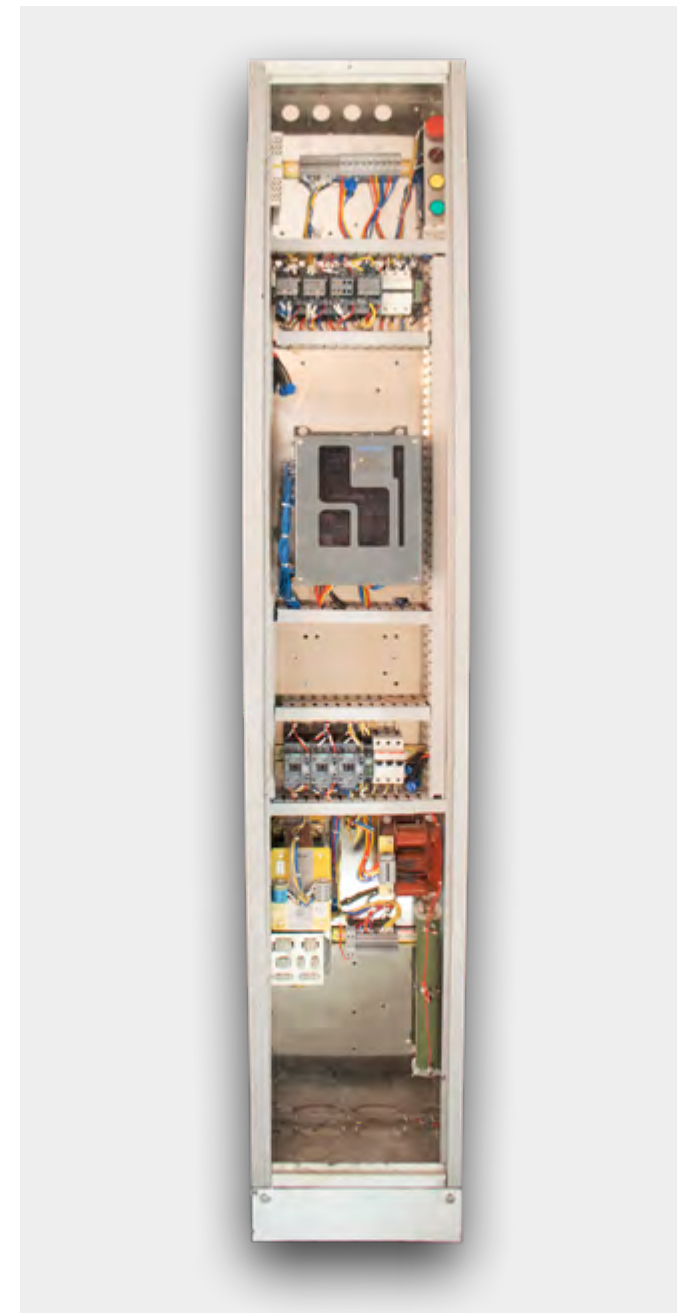
We can adjust car dimensions for you in any direction in 100 mm increments. Car width is available from 700 mm to 2000 mm, car depth from 700 mm to 2600 mm, and car height can right up to 2600 mm.

The door width is adjustable in 50mm increments for heights upto 2600 mm with a choice of telescopic or center-opening doors



Gearless Elevator Machine

With a small permanent magnet synchronous motor (PMSM) combined with a variable voltage, variable frequency(VVF) drive. This change reduces the size, weight, heat output and saves lot of energy as compared to traditional traction systems.



Control Master

ESCON's Integrated CAN Bus Serial V3F controller is very easy to adjust at site on account of the fully in house programming, developed at Escon's R&D centre.

Many of the complex functions such as Duplex control, Group control, Remote Monitoring, Emergency rescue, etc can be easily achieved with the help of the fully scalable controller making elevator operations highly safe and reliable. Cabling wires are reduced efficiently with new system configuration (car top board, car board, etc). The contactless sensors lead to lesser noise levels. More stability and best in class ride comfort are realised due to the excellent V3F Drive System.



Overspeed Governor

In the case of the elevator car ever exceeding its rated speed, the overspeed governor comes into play. These devices ensure strict adherence to safety standards.

Conventional elevator safety equipment includes an overspeed governor, for impeding elevator car movements, when a predetermined speed is exceeded. However the Overspeed Governor also includes a switch that opens when the elevator reaches a predetermined overspeed such as 110-140% of rated speed. When the switch opens, power is removed from the machine motor and brake. A braking mechanism is actuated in response to movement of the elevator car by motion transmission means which impedes the elevator car. The switch remains open and the elevator remains inoperable, until the switch is manually reset.

In more recently developed "Machine Room less" elevator systems, where the conventional machine room is eliminated, the governor and various other components are located in the hoistway.

Escon's special design ensures speed governors can be operated from elevator controller box, so that down time can be reduced making it easy to restore the lifts to normal working condition.

Safety Devices



ESCON Rescue Device (ERD)

Upon electric power supply failure, the car automatically moves to the nearest floor either up or down depending on the number of passengers in the elevator and doors automatically open by use of a rechargeable battery to facilitate the evacuation of passengers. An emergency car light automatically turns on immediately and provides minimum level of lighting within the car by means of the rechargeable battery.

Running time is minimized, as the ERD function gets completed as soon as the lift reaches floor level with door open. So overall efficiency of the system is improved.

Door sensor (infra red full height sensor) comes integrated and ease of operations is guaranteed. Motor over current protection and under current protection features are available with ERD.

ERD design is as per EN-81 safety standard norms. Encoder feedback from the motor can be connected directly to ERD to check and set load sensing direction. Brake feedback signal can be connected to ERD to cross check whether the brake is energised & running smoothly.



Gesture Call Mechanism

The system works with a Gesture Call mechanism that gives a call to the elevator both up and down based on the direction of hand movement across the sensor.



Integrated QR code Scanner

Once inside the elevator a call to the desired floor can be given via a QR code on the Mobile. The floor specific QR code is read by the integrated Scanner that takes the elevator to the desired floor. Multiple floors can be selected by showing the relative floor code one after the other.

Car operating panels and landing fixtures

From mechanical push buttons to touch sensitive fixtures Escon's LOP and COP enable smooth movement across the building. The indicators are dotmatrix and easily readable with brightly illuminated buttons



- | | |
|----|--|
| 01 | Landing Operating Panel - Mechanical |
| 02 | Landing Operating Panel - Attendant switch |
| 03 | Landing Operating Panel - Touch |
| 04 | Car Operating Panel - Mechanical |
| 05 | Car Operating Panel - Touch - Black |

Interiors

Choose from stainless steel to mild steel and multiple colours that will blend seamlessly with the building and enhance the overall look



Floor and Landing door

A wide range of finishes for the elevator floor and landing doors gives your building a superior look.

Car and Door Finishes

01 02 03 04
05 06 07 08
09 10 11 12
13 14 15 16
17 18 19

Flooring Options

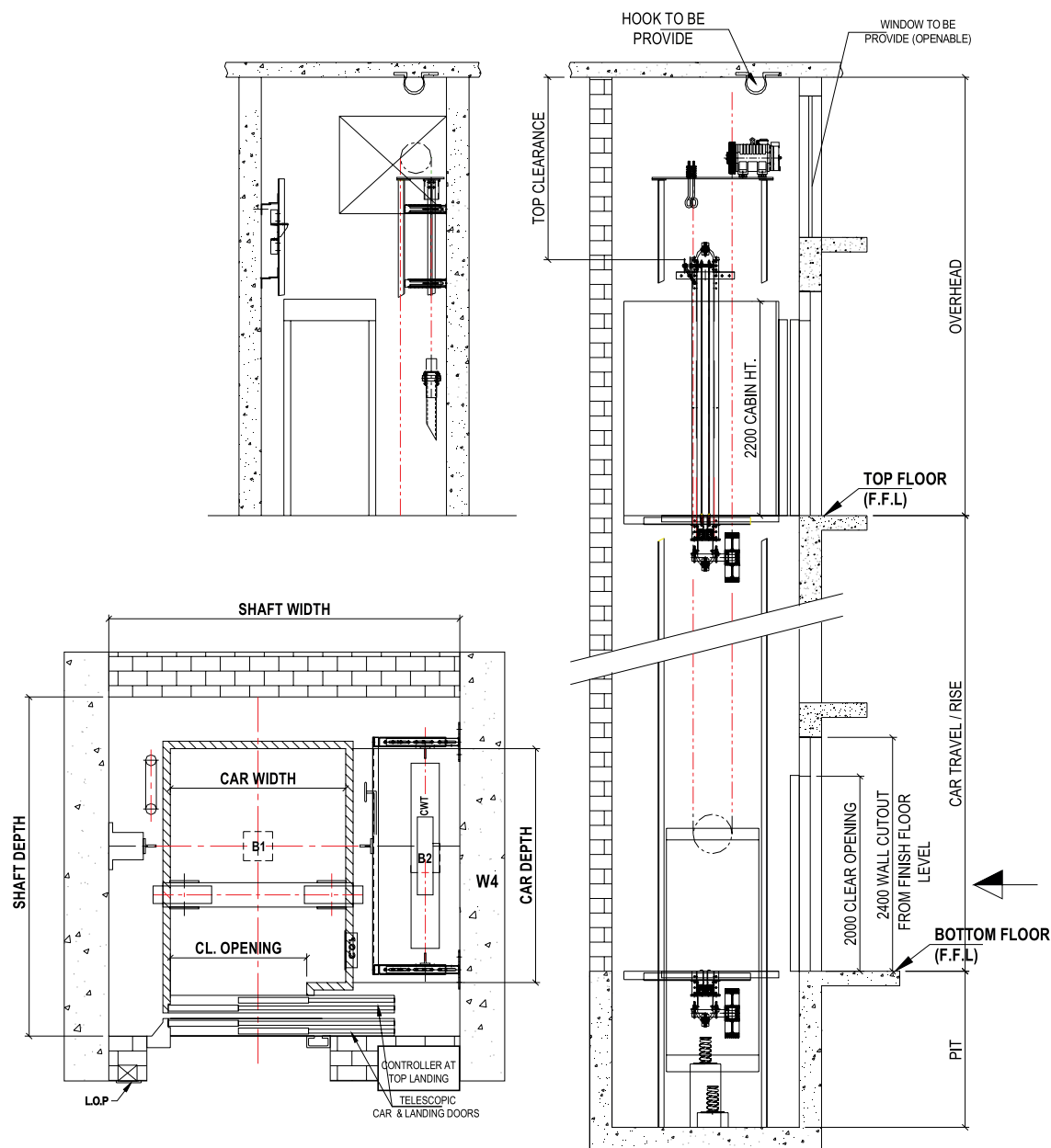
20 21 22
23 24 25
26

Landing door & Flooring options

01	Powder Coated - Ivory	14	Stainless Steel Mirror Etching - Square
02	Powder Coated - D A Grey	15	Stainless Steel Mirror Etching - Hexagon
03	Powder Coated - Siemens Grey	16	Stainless Steel Moonrock
04	Powder Coated - Signal Grey	17	Stainless Steel Checker Plates
05	Stainless Steel Hairline	18	Stainless Steel Linen
06	Stainless Steel Hairline -Bronze	19	Stainless Steel Linen Gold
07	Stainless Steel Hairline - Gold	20	Artificial Granite - Ginger Tan
08	Stainless Steel Hairline - Rose Gold	21	Artificial Granite - Stellar Grey
09	Stainless Steel Mirror - Rose Gold	22	Artificial Granite - Zodiac Black
10	Stainless Steel Mirror - Black	23	Artificial Granite - Sandstone Beige
11	Stainless Steel Mirror	24	Rubber Black
12	Stainless Steel Mirror - Gold	25	Rubber Studded Black
13	Stainless Steel - Honeycomb	26	Aluminium Checkered plate

Design and Specifications

Traction MRL - Hoisting Steel Ropes



MRL ELEVIO-TELESCOPIC OPENING DOOR											
Capacity	Car Size		Shaft Size		Opening	Pit			Over Head		
	Width	Depth	Width	Depth		1.00 Mps	1.50 Mps	1.75 Mps	1.00 Mps	1.50 Mps	1.75 Mps
10	1250	1400	2050	1900	800	1500	1600	2150	4200	4800	4800
13	1100	2000	1900	2500	900	1500	1600	2150	4200	4800	4800
15	1000	2400	1800	2900	900	1500	1600	2150	4200	4800	4800
16	1300	2000	2100	2500	1000	1500	1600	2150	4200	4800	4800
20	1300	2400	2100	2900	1000	1500	1600	2150	4200	4800	4800
26	1600	2400	2400	2900	1000	1500	1600	2150	4200	4800	4800

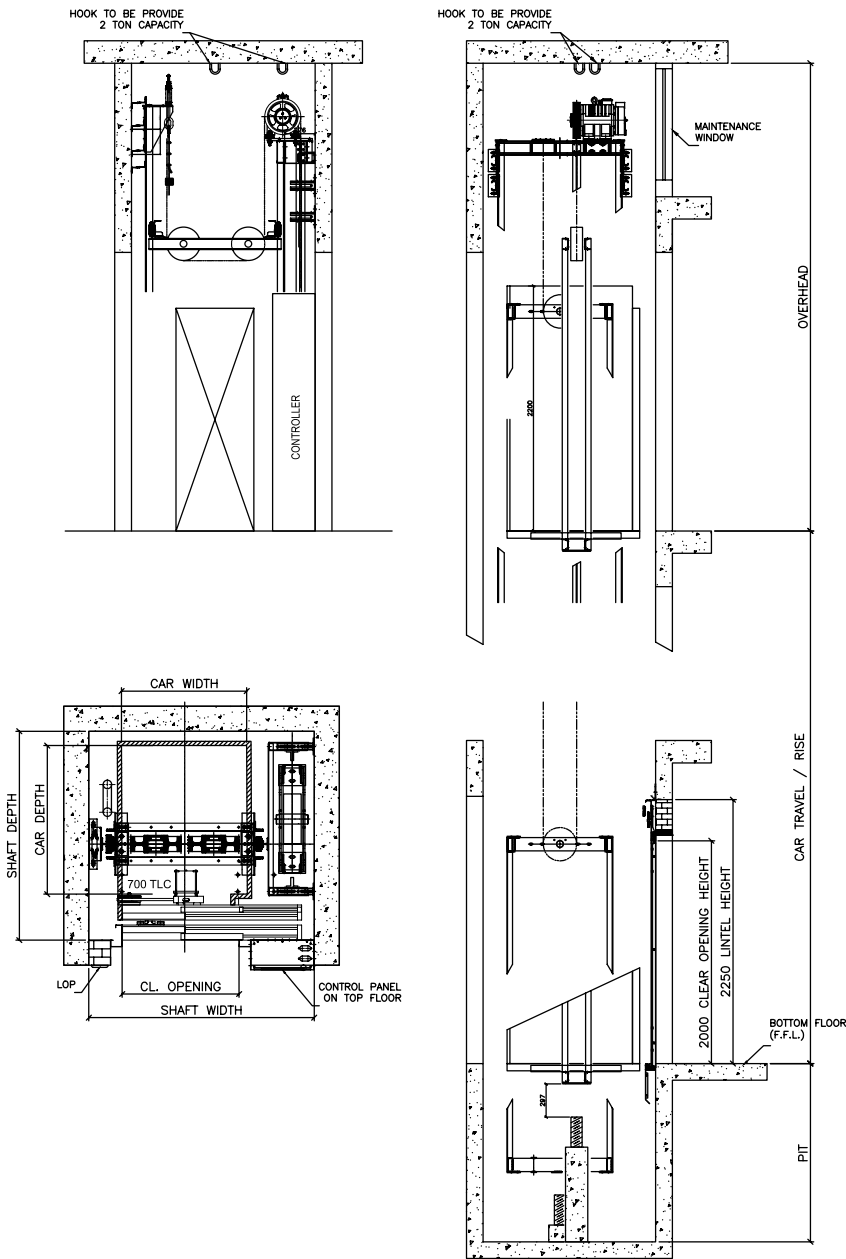
MRL ELEVIO-CENTER OPENING DOOR											
Capacity	Car Size		Shaft Size		Opening	Pit			Over Head		
	Width	Depth	Width	Depth		1.00 Mps	1.50 Mps	1.75 Mps	1.00 Mps	1.50 Mps	1.75 Mps
10	1250	1400	2150	1800	800	1500	1600	2150	4200	4800	4800
13	1100	2000	2150	2400	900	1500	1600	2150	4200	4800	4800
15	1000	2400	2100	2800	900	1500	1600	2150	4200	4800	4800
16	1300	2000	2350	2400	1000	1500*	1600	2150	4200*	4800	4800
20	1300	2400	2350	2800	1000	1500*	1600	2150	4200*	4800	4800
26	1600	2400	2450	2800	1000	1500*	1600	2150	4200*	4800	4800

Note: Above Dimensions are Considering Hoisting Steel Ropes

* For Mass Rapid Transit Pit depth is 1600 mm and minimum Over Head is 4800 mm

Design and Specifications

Traction MRL - Mini Elevio

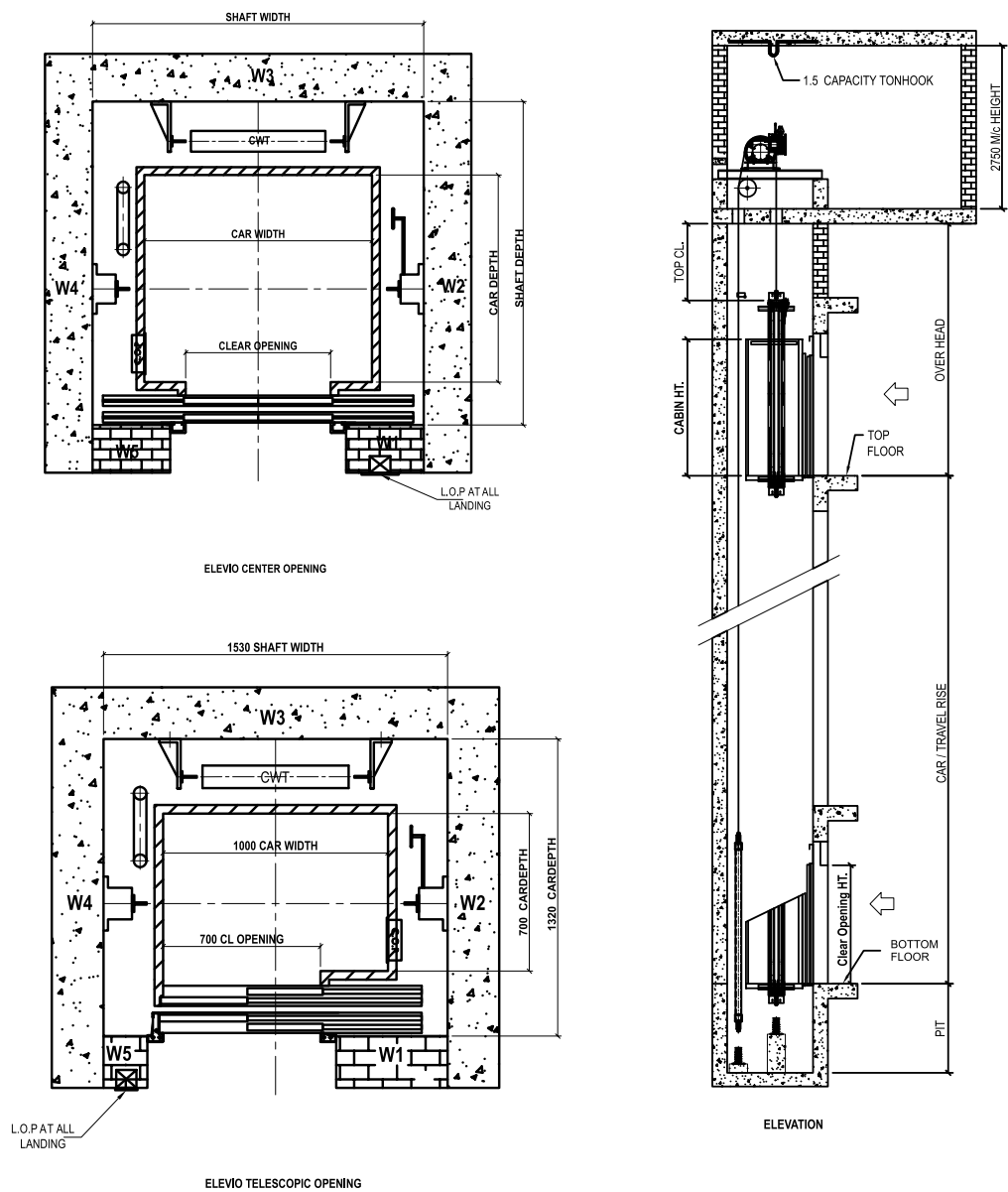


MINI ELEVIO-TELESCOPIC DOOR											
Capacity	Car Size		Shaft Size		Opening	Pit			Over Head		
	Width	Depth	Width	Depth		1.00 Mps	1.50 Mps	1.75 Mps	1.00 Mps	1.50 Mps	1.75 Mps
4	750	1000	1350	1450	700	1500	1800	2150	4500	4800	4800
5	850	1100	1450	1550	700	1500	1800	2150	4500	4800	4800
6	900	1200	1500	1650	700	1500	1800	2150	4500	4800	4800
8	1100	1300	1700	1750	800	1500	1800	2150	4500	4800	4800
10	1300	1350	1900	1800	800	1500	1800	2150	4500	4800	4800

Note: Above Dimensions are Considering Hoisting Steel Rope

Design and Specifications

MR - Automatic



ELEVIO OPENING CENTER. GL DOOR											
Capacity	Car size		Shaft Size		OPENING	Pit				Over head	
	Width	Depth	Width	Depth		1.0 / 1.5mps	1.75mps	2.0 / 2.5mps	1.0mps	1.5mps	1.75mps
4	1100	700	1600	1250	700	1600	—	—	4250	—	—
5	1100	850	1600	1400	700	1600	—	—	4250	4800	—
6	1100	1000	1600	1550	700	1600	2150	—	4250	4800	5200
8	1300	1100	1800	1650	800	1600	2150	2250	4250	4800	5200
10	1350	1300	1800	1850	800	1600	2150	2250	4250	4800	5200
13	2000	1100	2500	1650	900	1600	2150	2250	4250	4800	5200
16	2000	1300	2500	1850	1000	1600	2150	2250	4250	4800	5200
20	2000	1550	2500	2100	1000	1600	2150	2250	4250	4800	5200
26	1950	1950	2750	3000	1200	1600	2150	2250	4250	4800	5200

ELEVIO OPENING SIDE (DOOR OPENING TELESCOPIC. GL)											
Capacity	Car size		Shaft Size		OPENING	Pit				Over head	
	Width	Depth	Width	Depth		1.0 / 1.5mps	1.75mps	2.0 / 2.5mps	1.0mps	1.5mps	1.75mps
4	750	1000	1350	1550	700	1600	—	—	4250	—	—
5	850	1100	1350	1650	700	1600	—	—	4250	4800	—
6	900	1200	1400	1750	700	1600	2150	—	4250	4800	5200
8	1100	1300	1600	1850	800	1600	2150	2250	4250	4800	5200
10	1200	1450	1650	2000	800	1600	2150	2250	4250	4800	5200
13	1100	2000	1600	2550	900	1600	2150	2250	4250	4800	5200
15	1000	2400	1750	3000	900	1600	2150	2250	4250	4800	5200
16	1150	2350	1950	3000	1000	1600	2150	2250	4250	4800	5200
20	1300	2400	2100	3000	1000	1600	2150	2250	4250	4800	5200
26	1600	2400	2400	3000	1200	1600	2150	2250	4250	4800	5200

ELEVIO OPENING CENTER. GR DOOR											
Capacity	Car size		Shaft Size		OPENING	Pit		Over head			
	Width	Depth	Width	Depth		0.7mps	0.7mps				
4	1100	700	1600	1200	700	1350	4250	—	—	—	—
5	1100	850	1600	1350	700	1350	4250	—	—	—	—
6	1100	1000	1600	1500	700	1350	4250	—	—	—	—
8	1300	1100	1800	1600	800	1350	4250	—	—	—	—

ELEVIO OPENING SIDE (DOOR OPENING TELESCOPIC. GR)											
Capacity	Car size		Shaft Size		OPENING	Pit		Over head			
	Width	Depth	Width	Depth		0.7mps	0.7mps				
4	750	1000	1350	1600	700	1350	4250	—	—	—	—
5	850	1100	1350	1700	700	1350	4250	—	—	—	—
6	900	1200	1350	1800	700	1350	4250	—	—	—	—
8	1100	1300	1500	1900	800	1350	4250	—	—	—	—

- Machine room width = Shaft width + 1500
- Machine room depth = Shaft depth + 2500
- GL = Gearless • GR = Geared



At Your Service

For additional information please contact your nearest ESCON branch

Corporate Office

EL-116/2, T.T.C, Electronic Zone, M.I.D.C.,
Mahape, Navi Mumbai - 400710
Tel: +91-22-2761 2464 / 2761 3565
+91-7045 458952 / 53 / 54
Email: info@esconelevators.com

Branch Offices

Mumbai

414, 4th Floor, Gundecha Industrial Estate,
Akurli Road, Kandivali (East).
Mumbai - 400101
Tel: +91-22-2887 7532 / 1143
Email: sales@esconelevators.com

Navi Mumbai

401-404, 4th Floor, Punit Chambers,
Plot No.796-C, Sector 18, Vashi
Navi Mumbai - 400705
Tel: +91-22-2789 4157 / 2789 6521
Email: vashi@esconelevators.com

Pune

Zenith Complex Condominium, 28/1,
Office No.504, 5th Floor, Opp. Krushi Bhavan,
near Agriculture College,
Shivaji Nagar, Pune - 411005
Tel: +91-20-26439751
Email: punesales@esconelevators.com

New Delhi

Plot No.-69, 1st floor, Pandav Nagar,
Main Road, opp. Mother Dairy,
New Delhi - 110092
Tel: +91-8527296931
Email: delhisales@esconelevators.com

Hyderabad

1st floor, Uerekha court, Flat No.7, Ameerpet,
Hyderabad-500038
Tel: +91-40-2375 6482 / 2375 6785
Email: hydsales@esconelevators.com

Kolkata

1/413, 4th Floor,
New Alipore Market Complex, Block-M,
Kolkata - 700053
Tel: +91-33-2400 0077
Email: kolkata@esconelevators.com
kolsales@esconelevators.com

Bhubaneshwar

Plot No. A-17 / 12, 2nd floor, Unit-VII,
(Land Mark - Old Passport Office), Surya Nagar,
Bhubaneshwar - 751003 (Odisha)
Tel: +91-9040 045803
Email: bbsales@esconelevators.com

Visakhapatnam

46-18-20, 1st floor, Mandavaripet,
Dandaparthi, Visakhapatnam-53001
Tel: +91-891-2562 388
Email: vizag@esconelevators.com

Kochi

43/488, Sankarananda Ashram Road,
Near ESI Hospital, Ernakulam North,
Kochi-682018, (Kerala)
Tel: +91-484-4043 670 / 2390 098 / 96
Email: kochi@esconelevators.com
keralasales@esconelevators.com

Bangalore

Ice Queen Amber Building, 2nd floor,
Block A-209, Arkere Mico Gate, Bannerghatta
Main Road, above Union Bank Of India, behind
South India Shopping Mall,
Bangalore-560076
Tel: +91-80-4165 5800
Email: bglrsales@esconelevators.com

Kathmandu-Nepal

Royal Uni Tech Pvt. Ltd. Tripureshwar-11,
Kathmandu, Nepal
Tel: +977-1421 5652
Mobile: +977 9851189876 / 9841440279
Email: mktg@esconelevators.com

Other Locations:

Aurangabad | Nashik | Ratnagiri | Goa | Bhopal | Chandigarh | Dehradun | Jaipur | Asansol
Bellary | Siliguri | Calicut | Thiruvananthapuram | Bagalkot | Raichur | Shri Ganganagar
Durgapur | Karwar | Coimbatore | Lucknow | Kota

