

# ASTRON

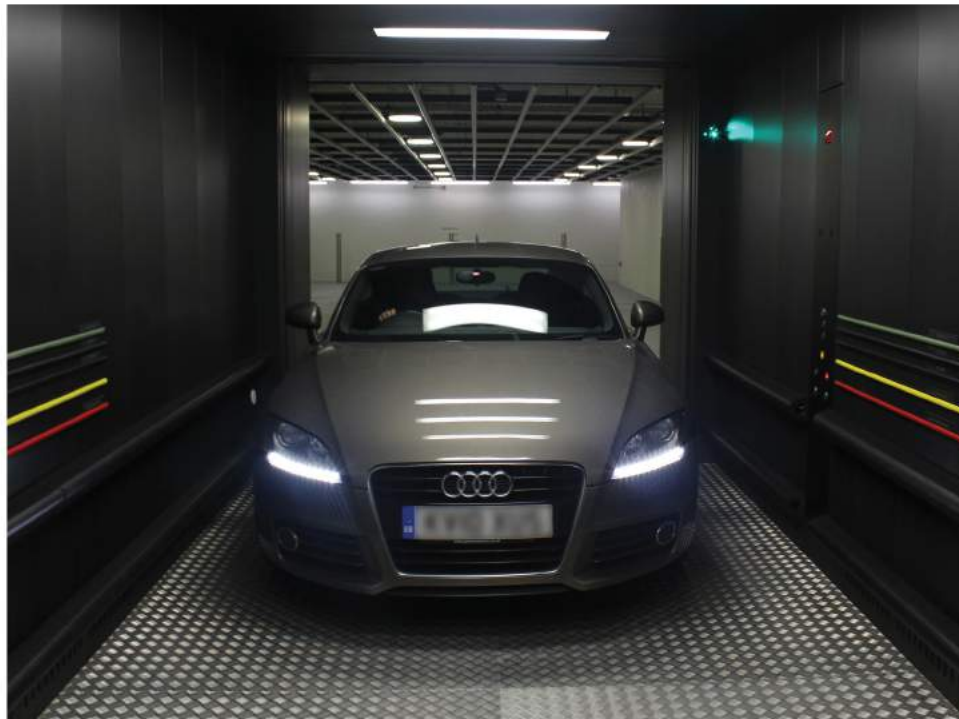
## Automobile Elevators

Shaping Urban Mobility

**ESCON**



The **ASTRON** range of car parking elevators has been designed to optimise the building parking and help reduce cost of ramp construction. Its **Intelligent** and **Energy Efficient** system leads to lesser waiting time and more available space for parking, making parking a breeze.



# ASTRON

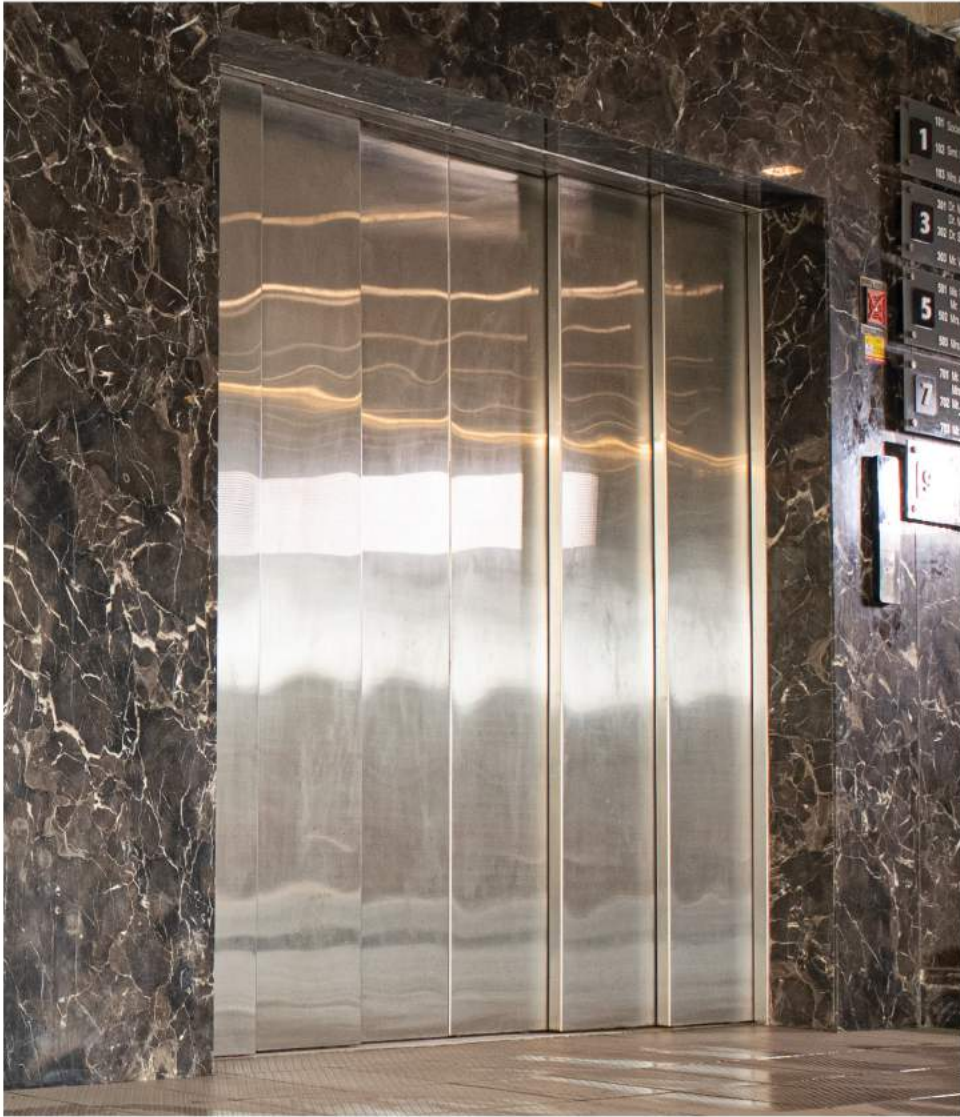
## Moving Solutions with safety and Reliability

Put a break on parking hassles with our Astron range of car parking elevator solutions.

### Key figures

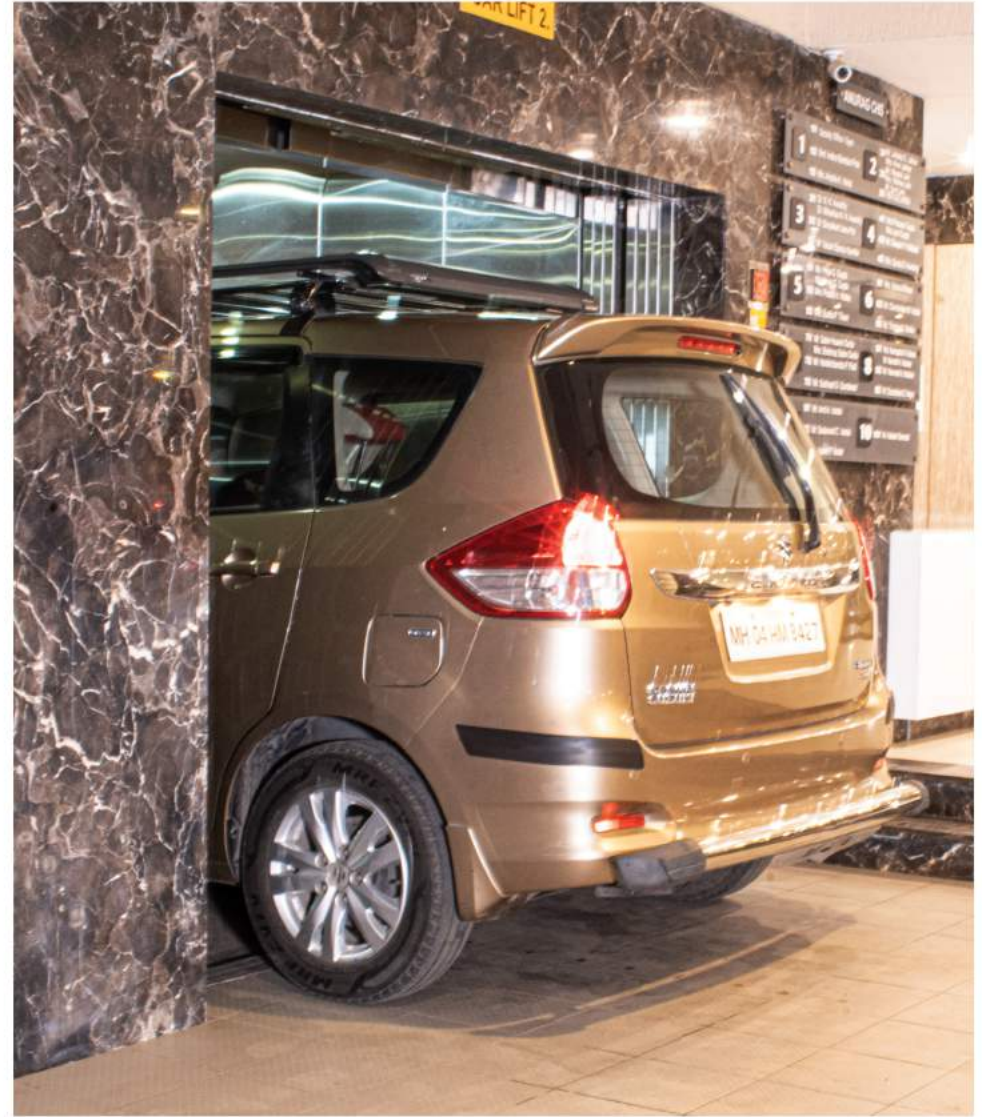
Capacity	2500 kg - 5000 kg
Travel height	Up to 80 m
Stops	Max 16 stops
Speed	0.3 m/s - 1.5 m/s
Drive system	Machine-Room or Machine-Room-Less or Hydraulic
Group size	Up to 1 car
Entrances	One- or two-sided





### State of the art technology

The Astron range is robust and made with heavy duty durable components, to meet various loading capacity requirements upto 5 tons. The elevator has sufficient maneuvering space provided for automobiles of different sizes and shapes, that can be driven in and out with ease.



### Working of ESCON Automobile lifts

ESCON's automobile lift works based on FIFO (First In First Out) principle. The landing calls will be served based on first come basis. The green indicator lamp glows to show that there are no pending calls and the vehicle can enter the elevator. The blue indicator lamps placed at each landing glows if the the lift is occupied with a vehicle indicating that the gate needs to be kept clear for exit of the vehicle. The red indicator lamp will turn on if there are other pending calls in queue. The red indicator will be turned off and green indicator will be turned on once the pending calls have been completed. On entering the lift from any floor other than EXIT floor, it is not required to press the call button inside the cabin and lift will proceed to main exit automatically.



## Key Features



### 1. Autodoor Sensor

A sensor detects the entry of the car and opens the door of the elevator automatically without having to press any button or step out of the vehicle

### 2. Indicator Lamp (Green)

When a call for the elevator is accepted, and there are no pending calls, then the green lamp is turned on to signal the vehicle, to make an entry into the elevator

### 3. "IN USE" Lamp (Blue)

When the elevator is occupied with a car, the lamp shows blue indicating that space in front of the door needs to be kept vacant to allow exit of the vehicle in the elevator

### 4. Indicator lamp (RED)

When a call for the elevator is accepted, but there are others in queue before, the lamp will indicate red light.

### 5. Indicator of Queue function

The queue indicator is provided at each landing to indicate the pending calls to be executed before attending this call.

## Specific features



### RFID ESCON Access Control System

The ESCON Access Control System provides robust extensive elevator security that is typically used for high rise condominium, apartments and office building applications. The system restricts the visitors to have access that they have been granted via automation. The elevator after they have been granted access by a building resident; and is programmable to restrict building residents to certain floors or grant them access to all floors. Residents must use their access card (or other access control device) to "turn on" the floor buttons that they have access to.

### Traction Type

- Key features include Accurate landing, smooth acceleration, comfortable riding, with low noise operation
- It conserves and save 40% energy in comparison to conventional AC control systems.
- It Enhances and provide High reliability operation in all aspects (All functions are controlled by micro controller and Its frequency of machine breakdown rates are minimized)
- There is also a Self checking system
- built-inside the micro controller.

### Hydraulic Type

- It requires smaller installation space than traction(rope) elevators which requires maximum space.
- It gives greater advantage for construction design.
- During power failure the car moves down to bottom floor automatically, which makes more reliable and safe for passenger.
- Safety devices are cut off, when the descending speed of car exceed the pre-determined speed.)

# Car operating panels and landing fixtures

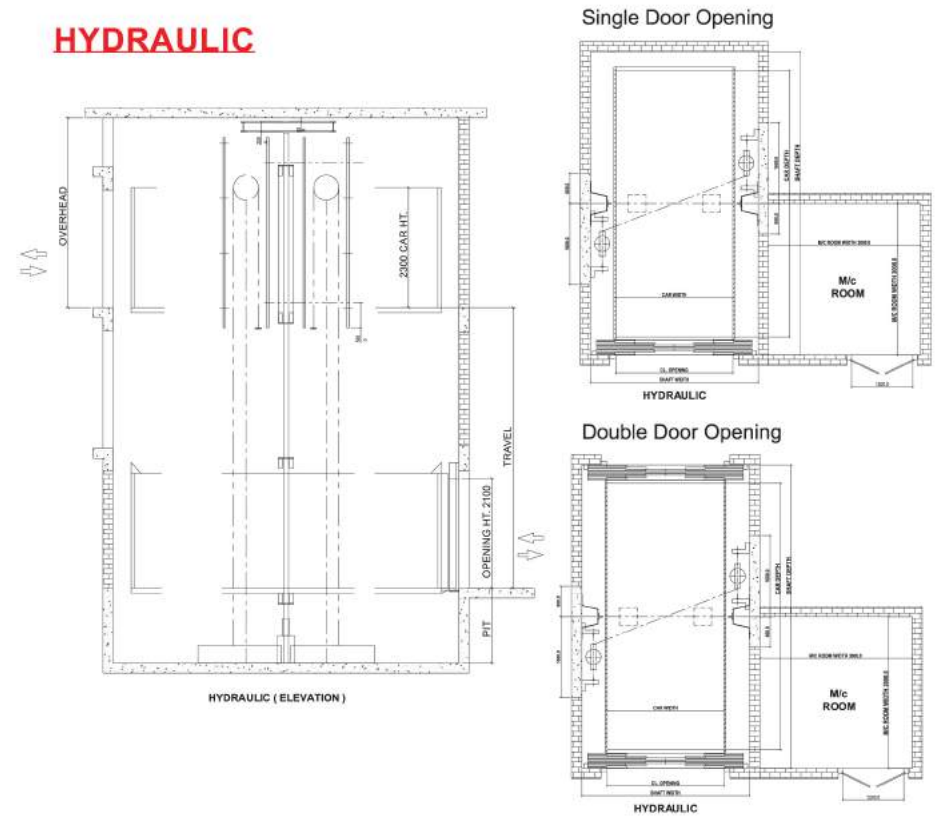
From mechanical push buttons to touch sensitive fixtures Escon's LOP and COP enable smooth movement across the building. The indicators are dotmatrix and easily readable with brightly illuminated buttons



- 01 Landing Operating Panel - Mechanical
- 02 Landing Operating Panel - Attendant switch
- 03 Landing Operating Panel - Touch
- 04 Car Operating Panel - Mechanical
- 05 Car Operating Panel - Touch - Black

# Design and Specifications

## HYDRAULIC



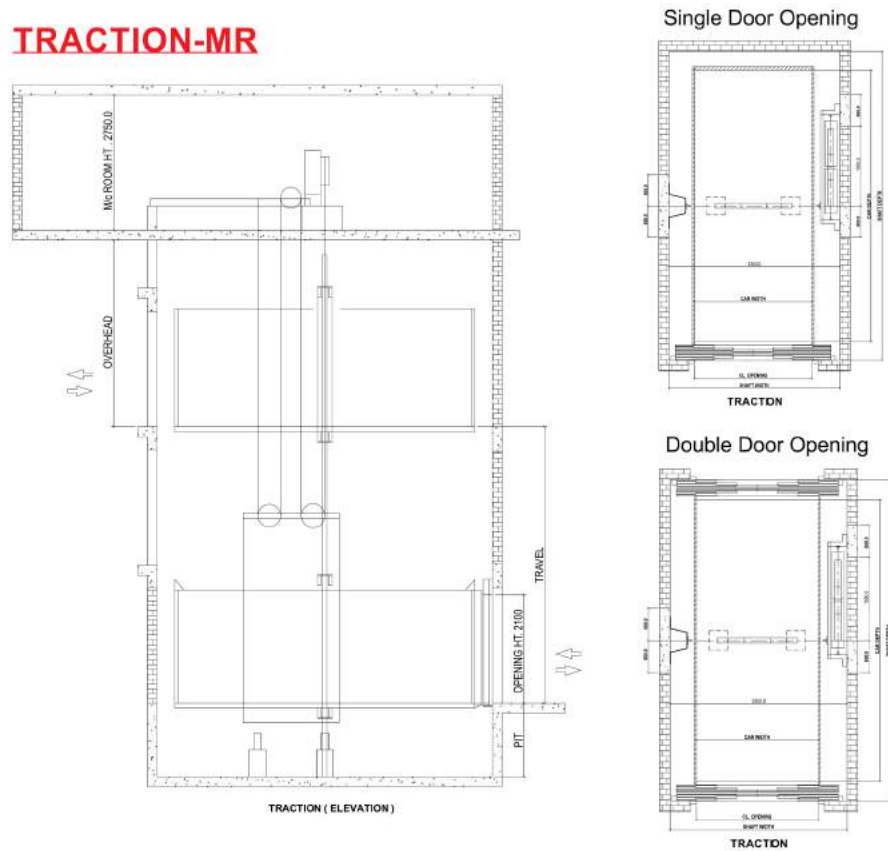
Speed starts with 0.5 mps

Standard Dimensions for 6 panel Hydraulic Car Elevator Both Side Opening								Machine Room	
Load (Kg.)	Car Width	Car Depth	Shaft Width	Shaft Depth	Opening	Pit	Overhead	Width	Depth
2500	2000	5250	3000	6000	2000	1500	3800	3000	3000
	2100	5250	3100	6000	2100	1500	3800	3000	3000
	2200	5250	3200	6000	2200	1500	3800	3000	3000
	2300	5250	3400	6000	2300	1500	3800	3000	3000
3000	2400	5450	3500	6200	2400	1500	3800	3000	3000
	2500	5450	3600	6200	2500	1500	3800	3000	3000
3500	2600	5750	3850	6500	2600	1500	3800	3000	3000
	2800	5950	4000	6500	2800	1500	3800	3000	3000



# Design and Specifications

## TRACTION-MR

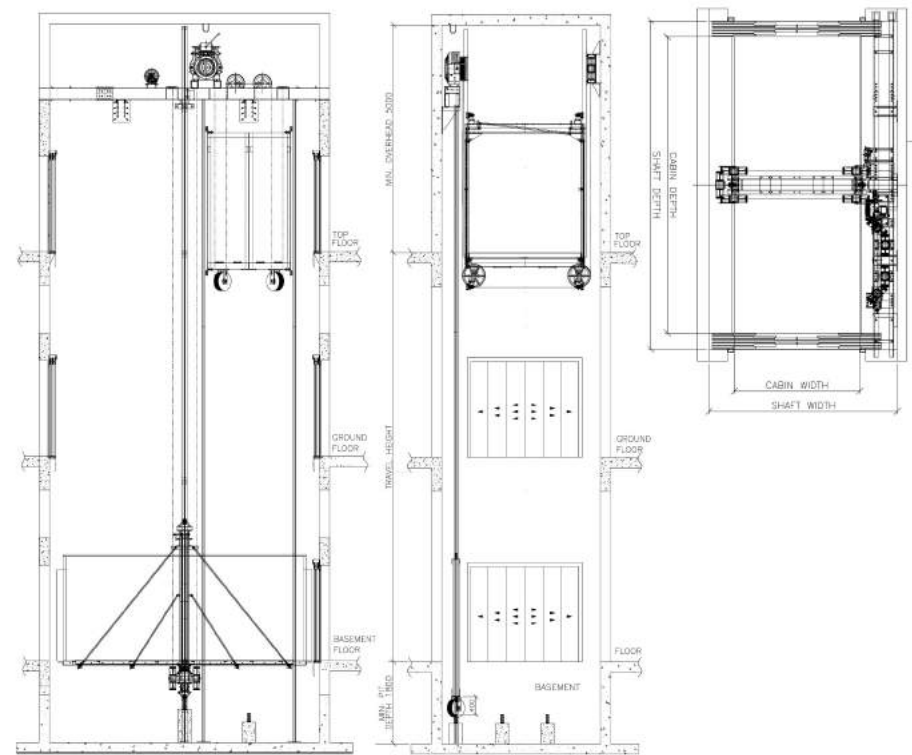


Speed starts with 0.5 mps to 1 mps

Standard Dimensions for 6 panel Traction - MR Car Elevator Both Side Opening								Machine Room	
Load (Kg.)	Car Width	Car Depth	Shaft Width	Shaft Depth	Opening	Pit	Overhead	Width	Depth
2500	2000	5266	3000	6000	2000	1500	4250	3000	6000
	2100	5266	3150	6000	2100	1500	4250	3150	6000
	2200	5266	3250	6000	2200	1500	4250	3250	6000
	2300	5266	3350	6000	2300	1500	4250	3350	6000
3000	2400	5466	3450	6200	2400	1500	4250	3450	6000
	2500	5466	3600	6200	2500	1500	4250	3600	6000
3500	2600	5766	3700	6500	2600	1500	4250	3700	6000
	2800	5966	3900	6500	2800	1500	4250	3900	6000

# Design and Specifications

## TRACTION-MRL



Speed starts with 0.5 mps to 1 mps, maximum speed up to 1.5 mps

Standard Dimensions for 6 panel Traction - MRL Car Elevator Both Side Opening								Machine Room	
Load (Kg.)	Car Width	Car Depth	Shaft Width	Shaft Depth	Opening	Pit	Overhead	Width	Depth
2500	2000	5266	3200	6000	2000	1800	5000	-	-
	2100	5266	3350	6000	2100	1800	5000	-	-
	2200	5266	3450	6000	2200	1800	5000	-	-
	2300	5266	3600	6000	2300	1800	5000	-	-
3000	2400	5466	3700	6200	2400	1800	5000	-	-
	2500	5466	3800	6200	2500	1800	5000	-	-
3500	2600	5766	4000	6500	2600	1800	5000	-	-
	2800	5966	4200	6700	2800	1800	5000	-	-

# At Your Service

For additional information please contact your nearest ESCON branch

## Corporate Office

EL-116/2, T.T.C, Electronic Zone, M.I.D.C.,  
Mahape, Navi Mumbai - 400710  
Tel: +91-22-2761 2464 / 2761 3565  
+91-7045 458952 / 53 / 54  
Email: info@esconelevators.com

## Branch Offices

### Mumbai

414, 4<sup>th</sup> Floor, Gundecha Industrial Estate,  
Akurli Road, Kandivali (East).  
Mumbai - 400101  
Tel: +91-22-2887 7532 / 1143  
Email: sales@esconelevators.com

### Navi Mumbai

401-404, 4<sup>th</sup> Floor, Punit Chambers,  
Plot No.796-C, Sector 18, Vashi  
Navi Mumbai - 400705  
Tel: +91-22-2789 4157 / 2789 6521  
Email: vashi@esconelevators.com

### Pune

Zenith Complex Condominium, 28/1,  
Office No.504, 5<sup>th</sup> Floor, Opp. Krushi Bhavan,  
near Agriculture College,  
Shivaji Nagar, Pune - 411005  
Tel: +91-20-26439751  
Email: punesales@esconelevators.com

### New Delhi

Plot No.-69, 1<sup>st</sup> floor, Pandav Nagar,  
Main Road, opp. Mother Dairy,  
New Delhi - 110092  
Tel: +91-8527296931  
Email: delhisales@esconelevators.com

### Hyderabad

1<sup>st</sup> floor, Uereka court, Flat No.7, Ameerpet,  
Hyderabad-500038  
Tel: +91-40-2375 6482 / 2375 6785  
Email: hydsales@esconelevators.com

### Kolkata

1/413, 4<sup>th</sup> Floor,  
New Alipore Market Complex, Block-M,  
Kolkata - 700053  
Tel: +91-33-2400 0077  
Email: kolkata@esconelevators.com  
kolsales@esconelevators.com

### Bhubaneshwar

Plot No. A-17 / 12, 2<sup>nd</sup> floor, Unit-VII,  
(Land Mark - Old Passport Office), Surya Nagar,  
Bhubaneshwar - 751003 (Odisha)  
Tel: +91-9040 045803  
Email: bbsales@esconelevators.com

### Visakhapatnam

46-18-20, 1<sup>st</sup> floor, Mandavaripet,  
Dandaparthi, Visakhapatnam-53001  
Tel: +91-891-2562 388  
Email: vizag@esconelevators.com

### Kochi

43/488, Sankarananda Ashram Road,  
Near ESI Hospital, Ernakulam North,  
Kochi-682018, (Kerala)  
Tel: +91-484-4043 670 / 2390 098 / 96  
Email: kochi@esconelevators.com  
keralasales@esconelevators.com

### Bangalore

Ice Queen Amber Building, 2<sup>nd</sup> floor,  
Block A-209, Arkere Mico Gate, Bannerghatta  
Main Road, above Union Bank Of India, behind  
South India Shopping Mall,  
Bangalore-560076  
Tel: +91-80-4165 5800  
Email: bglrsales@esconelevators.com

### Kathmandu-Nepal

Royal Uni Tech Pvt. Ltd. Tripureshwar-11,  
Kathmandu, Nepal  
Tel: +977-1421 5652  
Mobile: +977 9851189876 / 9841440279  
Email: mktg@esconelevators.com

## Other Locations:

Aurangabad | Nashik | Ratnagiri | Goa | Bhopal | Chandigarh | Dehradun | Jaipur | Asansol  
Bellary | Siliguri | Calicut | Thiruvananthapuram | Bagalkot | Raichur | Shri Ganganagar  
Durgapur | Karwar | Coimbatore | Lucknow | Kota



Like Us



Follow Us



Join Us



Follow Us